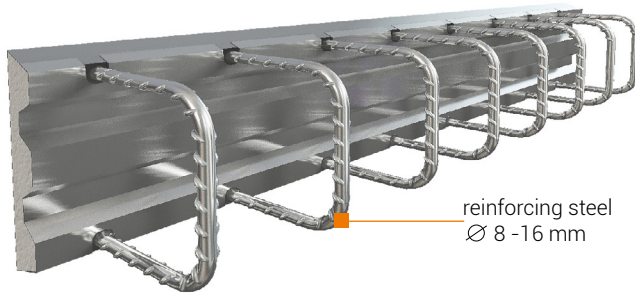


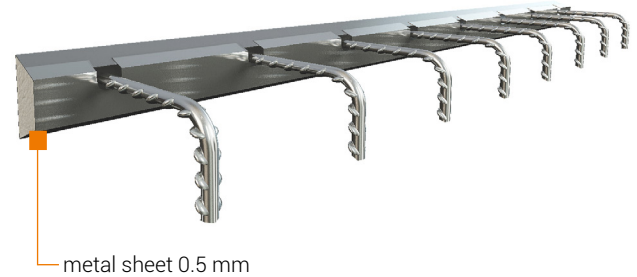


UBOX - the anchor channel is intended to be used for connecting elements of the following structures: reinforced concrete, monolithic and prefabricated. Types of anchor channels Ubox: double-row, single-row, with active seal and bitubox, special.

ASSEMBLY ELEMENTS



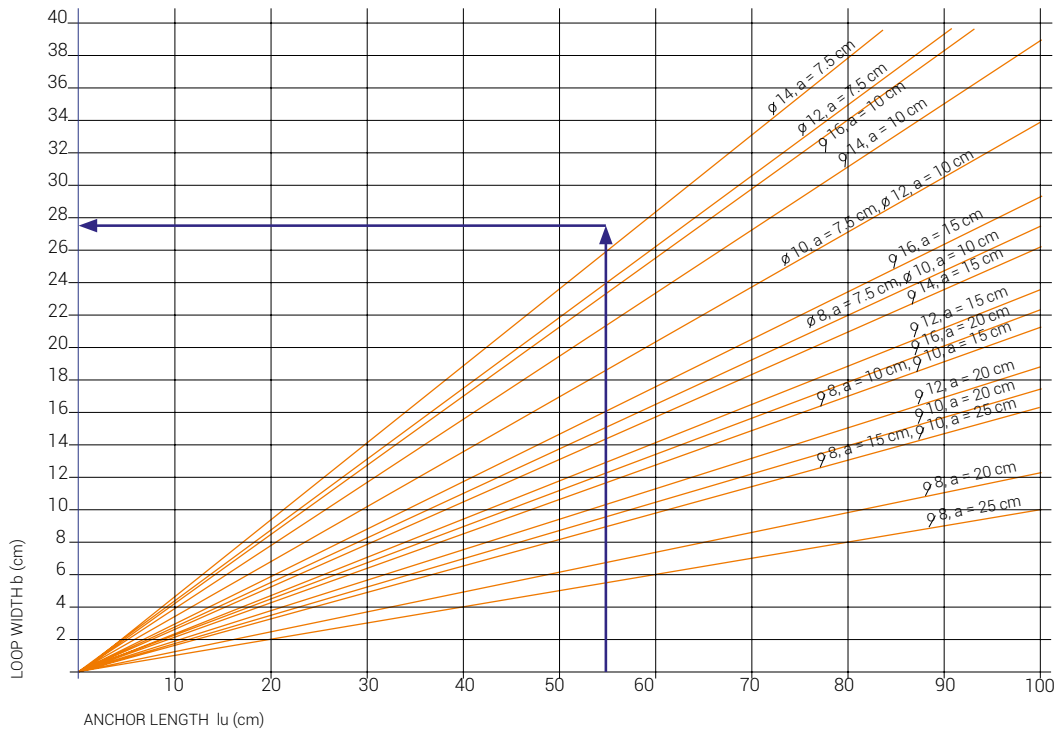
RSH UBOX



RSV UBOX

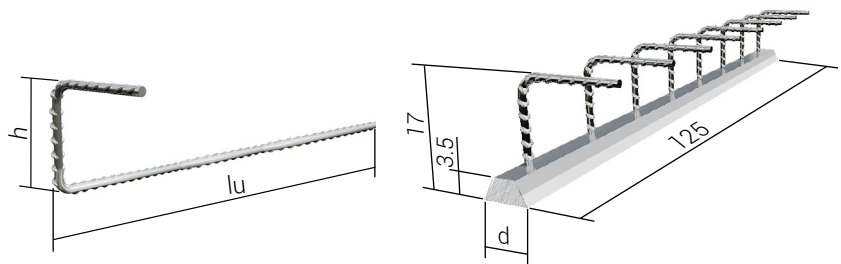
DIAGRAM

lu selection relative to loop width "b". Non-standard length: $L = 2 \times lu - 10$.



TECHNICAL DATA OF UBOX RSV

ARTICLE NUMBER	TYPE	STEEL ds [mm]	a [cm]	h [cm]	lu [cm]
807-0815	RSV 8-15	8	15	17	30
807-0820	RSV 8-20	8	20	17	30
807-1015	RSV 10-15	10	15	17	38
807-1020	RSV 10-20	10	20	17	38
807-1215	RSV 12-15	12	15	17	45
807-1220	RSV 12-20	12	20	17	45



UBOX RSV - flat category

Standard $L = 1.25 \text{ m}$



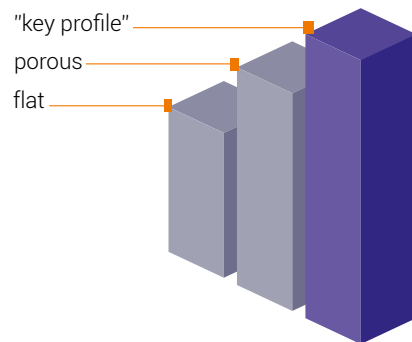
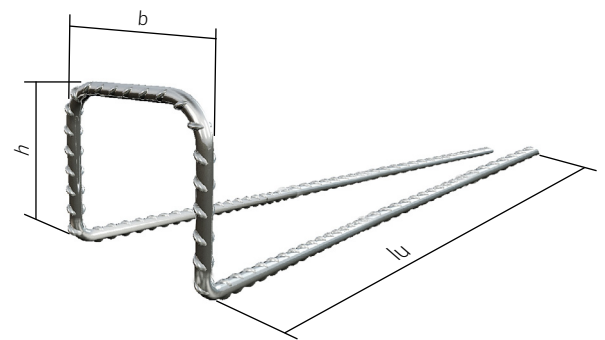
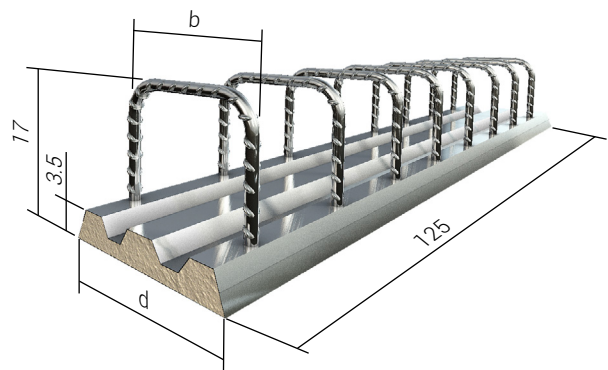
TECHNICAL DATA OF UBOX RSH

ARTICLE NUMBER	TYPE	b [mm]	STEEL ds [mm]	a [cm]	h [cm]	d [cm]	lu [cm]
808-0815	RSH 8-8-15	8	8	15	17	11	30
808-0820	RSH 8-8-20	8	8	20	17	11	30
808-1015	RSH 8-10-15	8	10	15	17	11	38
808-1020	RSH 8-10-20	8	10	20	17	11	38
891-0815	RSH 11-8-15	11	8	15	17	14	30
891-0820	RSH 11-8-20	11	8	20	17	14	30
891-1015	RSH 11-10-15	11	10	15	17	14	38
891-1020	RSH 11-10-20	11	10	20	17	14	38
891-1215	RSH 11-12-15	11	12	15	17	14	45
891-1220	RSH 11-12-20	11	12	20	17	14	45
892-0815	RSH 12-8-15	12	8	15	17	15	30
892-0820	RSH 12-8-20	12	8	20	17	15	30
892-1015	RSH 12-10-15	12	10	15	17	15	38
892-1020	RSH 12-10-20	12	10	20	17	15	38
892-1215	RSH 12-12-15	12	12	15	17	15	45
892-1220	RSH 12-12-20	12	12	20	17	15	45
894-0815	RSH 14-8-15	14	8	15	17	17	30
894-0820	RSH 14-8-20	14	8	20	17	17	30
894-1015	RSH 14-10-15	14	10	15	17	17	38
894-1020	RSH 14-10-20	14	10	20	17	17	38
894-1215	RSH 14-12-15	14	12	15	17	17	45
894-1220	RSH 14-12-20	14	12	20	17	17	45
896-0815	RSH 16-8-15	16	8	15	17	19	30
896-0820	RSH 16-8-20	16	8	20	17	19	30
896-1015	RSH 16-10-15	16	10	15	17	19	38
896-1020	RSH 16-10-20	16	10	20	17	19	38
896-1215	RSH 16-12-15	16	12	15	17	19	45
896-1220	RSH 16-12-20	16	12	20	17	19	45
896-1615	RSH 16-16-15	16	16	15	17	19	65
896-1620	RSH 16-16-20	16	16	20	17	19	65
898-0815	RSH 18-8-15	18	8	15	17	21	30
898-0820	RSH 18-8-20	18	8	20	17	21	30
898-1015	RSH 18-10-15	18	10	15	17	21	38
898-1020	RSH 18-10-20	18	10	20	17	21	38
898-1215	RSH 18-12-15	18	12	15	17	21	45
898-1220	RSH 18-12-20	18	12	20	17	21	45
898-1615	RSH 18-16-15	18	16	15	17	21	65
898-1620	RSH 18-16-20	18	16	20	17	21	65
890-0815	RSH 20-8-15	20	8	15	17	23	30
890-0820	RSH 20-8-20	20	8	20	17	23	30
890-1015	RSH 20-10-15	20	10	15	17	23	38
890-1020	RSH 20-10-20	20	10	20	17	23	38
890-1215	RSH 20-12-15	20	12	15	17	23	45
890-1220	RSH 20-12-20	20	12	20	17	23	45
890-1615	RSH 20-16-15	20	16	15	17	23	65
890-1620	RSH 20-16-20	20	16	20	17	23	65

ARTICLE NUMBER	TYPE	b [mm]	STEEL ds [mm]	a [cm]	h [cm]	d [cm]	lu [cm]
899-0815	RSH 22-8-15	22	8	15	17	25	30
899-0820	RSH 22-8-20	22	8	20	17	25	30
899-1015	RSH 22-10-15	22	10	15	17	25	38
899-1020	RSH 22-10-20	22	10	20	17	25	38
899-1215	RSH 22-12-15	22	12	15	17	25	45
899-1220	RSH 22-12-20	22	12	20	17	25	45
899-1615	RSH 22-16-15	22	16	15	17	25	65
899-1620	RSH 22-16-20	22	16	20	17	25	65

Standard L = 1.25 m

UBOX RSH - "key profile" category. Product meets all the requirements according to **EUROCODE 2**.



COMPARISON OF ANCHOR CHANNELS BEARING CAPACITY
RSH Ubox transfers bigger loads.

