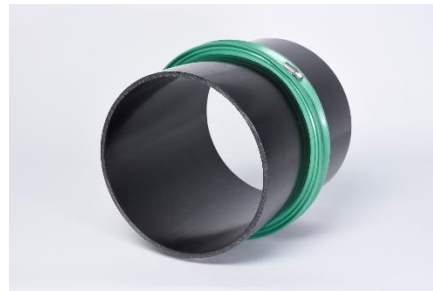


DURO Plus High-pressure lining pipe



DURO Plus high-pressure lining pipes are the ideal product for secure and pressure water-tight routing of media pipes through walls, floors and base slabs.



DURO Plus

The pipes are fitted with a collar that forms a pressure water-tight seal and reliably prevents water ingress at the interface between the **DURO Plus high-pressure lining pipe** and the in-situ concrete.

Technical specifications:

Article number:	090010 to 090383
Colour:	Pipe: black Collar: green (Rondo Base)
Material:	Pipe: PVC Collar: TPE
Density:	Pipe: approx. 1.39 kg/dm ³ Collar: approx. 1.17 kg/dm ³
Weight:	0.31 kg – 14.92 kg
Service temperature range:	- 30°C to + 60°C
Test certificate / approvals:	Test report MFPA Leipzig No.: PB 5.1 / 15-230

MASTERTEC GmbH & Co. KG

Gewerbegebiet Unterhaid · Im Maintal 13 · D-96173 Oberhaid · Tel.: +49 (0) 9503 5047-0 · Fax: +49 (0) 9503 5047-20 · info@mastertec.eu

Quellbänder · Fugenbleche · Injektionsschläuche · Schalöl · Harze · Mauerkragen · Rohrdurchführungen · Ringraumdichtungen · Blitzschutz · Trittschall · Mauersperrbahnen · Streckmetall

www.MASTERTEC.eu

Pressure water-tightness: 5 bar: at DN 50
7 bar: DN 80 – DN 300

Packing unit: available singly

Storage: in a dry place and out of direct sunlight

Disposal: Can be disposed of at municipal waste landfill sites, taking into account local waste disposal regulations.

Sizes:

DURO inner Ø mm	outer Ø mm	Standard lengths											
		200 mm	240 mm	250 mm	300 mm	350 mm	365 mm	400 mm	500 mm	600 mm	800 mm	1000 mm	1200 mm
DN 50	54	090010	090013	090016	090019	090022	090025	090028	090031	090034	090037	090040	090043
Weight/pc.		0,31 kg	0,37 kg	0,39 kg	0,46 kg	0,54 kg	0,56 kg	0,62 kg	0,78 kg	0,93 kg	1,24 kg	1,56 kg	1,87 kg
DN 80	85	090050	090053	090056	090059	090062	090065	090068	090071	090074	090077	090080	090083
Weight/pc.		0,30 kg	0,36 kg	0,38 kg	0,45 kg	0,53 kg	0,55 kg	0,60 kg	0,76 kg	0,91 kg	1,21 kg	1,52 kg	1,82 kg
DN 100	110	090110	090113	090116	090119	090122	090125	090128	090131	090134	090137	090140	090143
Weight/pc.		0,60 kg	0,72 kg	0,76 kg	0,91 kg	1,06 kg	1,10 kg	1,21 kg	1,52 kg	1,82 kg	2,43 kg	3,04 kg	3,64 kg
DN 125	137	090150	090153	090156	090159	090162	090165	090168	090171	090174	090177	090180	090183
Weight/pc.		0,75 kg	0,90 kg	0,94 kg	1,12 kg	1,31 kg	1,37 kg	1,50 kg	1,88 kg	2,25 kg	3,00 kg	3,76 kg	4,51 kg
DN 150	162	090210	090213	090216	090219	090222	090225	090228	090231	090234	090237	090240	090243
Weight/pc.		0,86 kg	1,03 kg	1,08 kg	1,29 kg	1,51 kg	1,57 kg	1,72 kg	2,16 kg	2,59 kg	3,45 kg	4,32 kg	5,18 kg
DN 200	214	090250	090253	090256	090259	090262	090265	090268	090271	090274	090277	090280	090283
Weight/pc.		1,31 kg	1,57 kg	1,64 kg	1,96 kg	2,29 kg	2,39 kg	2,62 kg	3,28 kg	3,93 kg	5,24 kg	6,56 kg	7,87 kg
DN 250	264	090310	090313	090316	090319	090322	090325	090328	090331	090334	090337	090340	090343
Weight/pc.		1,63 kg	1,95 kg	2,04 kg	2,44 kg	2,85 kg	2,97 kg	3,26 kg	4,08 kg	4,89 kg	6,52 kg	8,16 kg	9,79 kg
DN 300	316	090350	090353	090356	090359	090362	090365	090368	090371	090374	090377	090380	090383
Weight/pc.		2,48 kg	2,98 kg	3,11 kg	3,73 kg	4,35 kg	4,54 kg	4,97 kg	6,22 kg	7,46 kg	9,95 kg	12,44 kg	14,92 kg

Any intermediate lengths can be supplied.
Lengths up to 3000 mm are available
We recommend installation with the closure plug

Further product characteristics

Smooth inner walls
Break-proof
Light weight enables quick and easy installation.
Inner pipe can be sealed using gasket insert or modular seal.

MASTERTEC GmbH & Co. KG

Gewerbegebiet Unterhaid · Im Maintal 13 · D-96173 Oberhaid · Tel.: +49 (0) 9503 5047-0 · Fax: +49 (0) 9503 5047-20 · info@mastertec.eu

Quellbänder · Fugenbleche · Injektionsschläuche · Schalöl · Harze · Mauerkragen · Rohrdurchführungen · Ringraumdichtungen · Blitzschutz · Trittschall · Mauersperrbahnen · Streckmetall

www.MASTERTEC.eu

Resistances:

e.g.
Diluted acids
Diluted alkalis
Liquid manure and slurry
Fermentation mash
Oil and bitumen
Radon
Methane gas
Ozone
Liquids aggressive to concrete

Further resistances are available on request

Application:



The **DURO Plus high-pressure lining pipe** can be concreted in or installed in wall openings where the materials used do not have to meet any special demands (such as fire protection). The external collar makes this a pressure water-tight pipe duct.

Fixing:



Our plastic closure plug offers a quick, effective and cost-efficient installation aid.

No need for additional shuttering work. The closure plugs are reusable.

We supply closure plugs in the following sizes:

DN 50, DN 80, DN 100, DN 125, DN 150, DN 200, DN 250 and DN 300

MASTERTEC GmbH & Co. KG

Gewerbegebiet Unterhaid · Im Maintal 13 · D-96173 Oberhaid · Tel.: +49 (0) 9503 5047-0 · Fax: +49 (0) 9503 5047-20 · info@mastertec.eu

Quellbänder · Fugenbleche · Injektionsschläuche · Schalöl · Harze · Mauerkragen · Rohrdurchführungen · Ringraumdichtungen · Blitzschutz · Trittschall · Mauersperrbahnen · Streckmetall

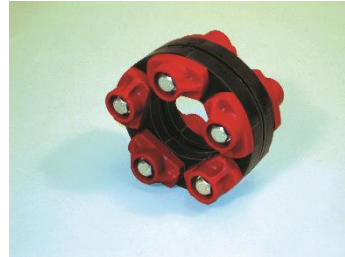
www.MASTERTEC.eu

System-compliant sealing accessories:

Used in combination, our MASTER-Ring gasket inserts and MASTER-SEAL modular seals provide a system-compliant and tested sealing system.



MASTER-RING gasket insert



MASTER-SEAL modular seal

Safety:

The **DURO Plus high-pressure lining pipe** does not contain any hazardous substances and poses no problems whatsoever in terms of handling and application. To the best of our knowledge, it contains no substances that are harmful to groundwater or could trigger health problems or allergic reactions in the installer.

Nonetheless, we recommend that an appropriate level of hygiene is observed during application and that hands are washed as a basic rule before meals.

Basic principles:

All dimensions and information in this data sheet reflect the results of the laboratory tests that have been carried out.

Deviations from the values determined by us under laboratory conditions are possible due to environmental and operating conditions beyond our control.

The data in this data sheet only applies for the product delivered by us.

The product data corresponds only to the specifications in Germany and does not take into account possible country-specific deviations.

Disclaimer:

The technical information reflects our current knowledge of the DURO Plus high-pressure lining pipe. It is intended only as information for users. As we do not know the intended applications and installation conditions, it is the responsibility of the user to carefully check that the product is fit for purpose. Due to the different components at the installation site and the in-situ working conditions, MASTERTEC cannot provide any guarantee whatsoever for the result of the work. Claims arising from any legal relationship can only be recognised in the event of wilful intent or gross negligence, irrespective of the statements made here or advice provided verbally. In this case the user must prove that he has provided MASTERTEC in writing with all the information required to correctly assess the installation situation in good time. Subject to necessary product specifications or further developments. By providing this information MASTERTEC does not intend to infringe third-party rights. The latest data sheet in each case applies. Our corresponding terms and conditions of sale and delivery apply.

Version dated 10-2016

MASTERTEC GmbH & Co. KG

Gewerbegebiet Unterhaid · Im Maintal 13 · D-96173 Oberhaid · Tel.: +49 (0) 9503 5047-0 · Fax: +49 (0) 9503 5047-20 · info@mastertec.eu

Quellbänder · Fugenbleche · Injektionsschläuche · Schalöl · Harze · Mauerkragen · Rohrdurchführungen · Ringraumdichtungen · Blitzschutz · Trittschall · Mauersperrbahnen · Streckmetall

www.MASTERTEC.eu