

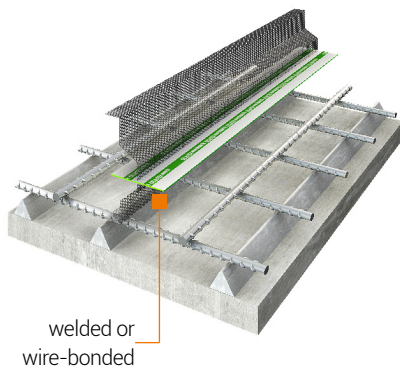
General recommendations:

- During the installation observe the compulsory security standards - wear protective gloves and work clothes with long sleeves.
- During transport and storage, protect against mechanical damage.
- Above 30 cm stays made with rebars are needed.
- Up to 30 cm Forflex 1000 C is self-supported.

SELF-SUPPORTED <math>H < 30 \text{ CM}</math>

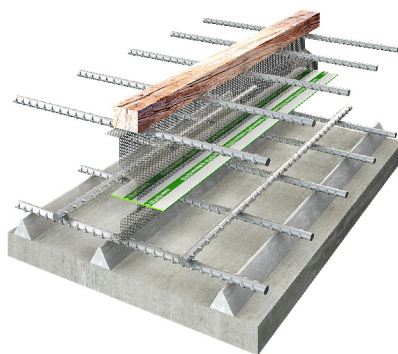
STEP > 1

Installation of Forflex 1000 C to reinforcing mesh.



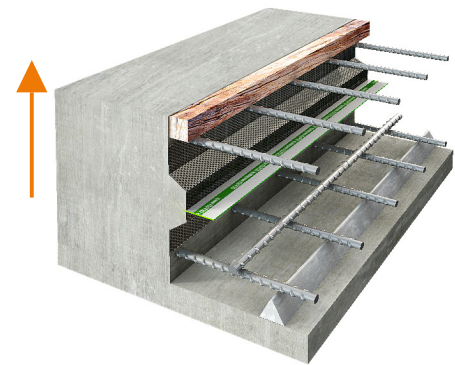
STEP > 2

Addition of upper reinforcement and wooden beam.



STEP > 3

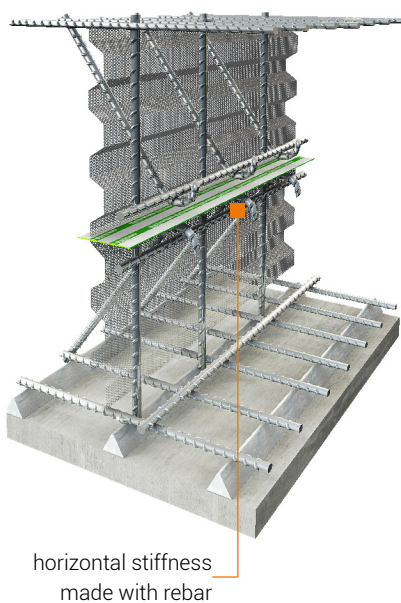
Concreting.



STAYS $H > 30 \text{ CM}$

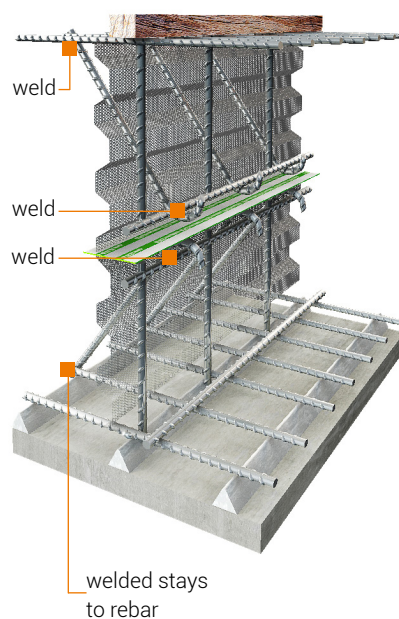
STEP > 1

Installation of Forflex 1000 C with upper reinforcement and horizontal stiffness.
Installation of stays.



STEP > 2

Addition of wooden beam.



STEP > 3

Concreting - to do with pressure on the bars.

